



Students in SEL programs increase academic performance up to 11%¹

BETTERING A NATION'S YOUTH AND FUTURE



Navigating childhood isn't easy. As they develop socially, emotionally, and intellectually – and face challenges at home, in school, and from peers – youngsters can become overwhelmed. Fortunately,

students in far southern Japan's Miyakojima City are gaining valuable skills to carry them confidently through school and into their futures through Lions Quest, Lions Clubs International Foundation's signature youth development program.

Committed to enhancing teachers' ability to cultivate children adept at managing emotions, achieving goals, building positive relationships,

"Lions Quest cultivates critical skills."

and making responsible decisions, school officials launched a five-year strategy to implement Lions Quest's social and emotional learning (SEL) approach. With grant funding from LCIF and help from local Lions, in 2018 Lions Quest professional trainers began delivering workshops to all 600 Miyakojima kindergarten through junior high school teachers. Rollout of Lions Quest's *Skills for Growing* and *Skills for Adolescence* programs continues, and results are already astounding.

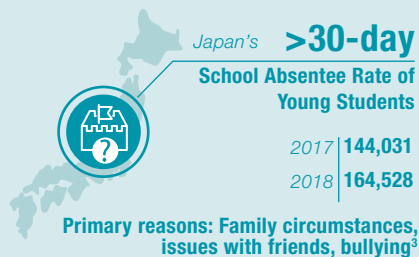
"Universally essential are connection with people, communication skills, and team-building skills. These lead to positive youth development," said Hiroaki Niiyama, of the Miyako Lions Club. "Lions Quest cultivates these critical skills."

Youth



For the Children

SEL positively affects academic performance and physical health, and is demanded by employers and essential for lifelong success².



THAT'S THIS PART OF THE WORLD. GLOBALLY, THE SITUATION LOOKS LIKE THIS:



Schools with **positive school climate practices** like Lions Quest have less absenteeism⁶



Every US\$1 spent on **SEL initiatives** yields US\$11 **return on investment**⁷

Among **top 10 skills** needed and fostered through Lions Quest

- Critical thinking
- Decision-making
- Service orientation
- Emotional intelligence⁸



LCIF AND LIONS

lCIF.org/youth

Funding Service, Delivering Solutions

Harvard University found students participating in Lions Quest reported improved perceptions of school climate, and physical and emotional safety⁹. For 35 years+, LCIF has funded Lions Quest globally. Our commitment continues.

LIONS QUEST PROGRAM GRANTS
develop/expand the program

UP TO US\$150,000

LIONS QUEST COMMUNITY PARTNERSHIP GRANTS
launch/reactivate the program

UP TO US\$15,000

LIONS QUEST PROMOTIONAL GRANTS
introduce the program to a community

UP TO US\$1,500

DISTRICT AND CLUB COMMUNITY IMPACT GRANTS
apply to local district and club projects

GRANT AMOUNT VARIES

SOURCES/NOTE: ¹Durlak, J.A., Weissberg, R.P., Dymnicki, A.B., Taylor, R.D., & Schellinger, K. (2011). The impact of enhancing students' social and emotional learning: A meta-analysis of school-based universal interventions. Child Development: 82 (1), 405-432; ²ResearchGate; ³BBC News; ⁴National Center for Biotechnology Information; ⁵Job Market Monitor; ⁶Thapa, A., Cohen, J., Guffey, S., & Higgins-D'Alessandro, A. (2013). A review of school climate research. Review of educational research, 83(3), 357-385; ⁷Education Dive; ⁸World Economic Forum; ⁹Jones, S., Kahn, J., Nelson, B., and Temko, S. (2019). "Year 2 Report: A Quasi-Experimental Evaluation of Lions Quest Skills for Adolescence in Two Middle Schools." Cambridge, MA: Harvard University Graduate School of Education; grant limits subject to change



**Lions Clubs International
FOUNDATION**

LCIF is the grant-making body empowering Lions to create greater impact in their communities and around the world. The vast majority of funding LCIF receives is from Lions; one hundred percent of every donation supports Lions service through LCIF grants and programs.

Youth is just one cause area supported by LCIF and *Campaign 100: LCIF Empowering Service*. With financial support from Lions and clubs worldwide, Campaign 100 is empowering Lions to increase service impact in vision, youth, disaster relief, and humanitarian efforts; fight the global epidemic of diabetes; and make important progress in expanded cause areas of childhood cancer, hunger, and the environment.

**SUPPORT YOUR SERVICE
BY SUPPORTING YOUR
FOUNDATION**

lionsclubs.org/donate