



Students in SEL programs increase academic performance up to 11%¹

BETTERING A NATION'S YOUTH AND FUTURE



Navigating childhood isn't easy. Developing socially, emotionally, and intellectually – and facing challenges at home, in school, and from peers – can overwhelm youngsters. Fortunately, like nearly 20 million students

and teachers worldwide, 12,000 Bangladeshi children and educators recently completed Lions Quest, the signature youth development program of Lions Clubs International Foundation (LCIF).

Familiar with LCIF's world-renowned social and emotional learning program, researchers from Australian and German universities were eager to implement Lions Quest in four rural, impoverished Bangladesh areas and evaluate its impact on early childhood development. However, they lacked funds to translate the *Skills for Growing* curriculum into Bengali, conduct teacher workshops, and deliver the program to students.

"We must help children be confident members of society."

Keeping the children's welfare in mind, LCIF stepped in, providing US\$85,000+ in grant funding to make a 12-month pilot implementation possible. Researchers are now analyzing students' enhanced ability to manage emotions, achieve goals, and build positive relationships.

With heightened government interest, Lions hope to expand Lions Quest in Bangladesh to include the *Skills for Adolescence* curriculum. Said one Lion, "We must do everything possible to help children be confident, productive members of society."



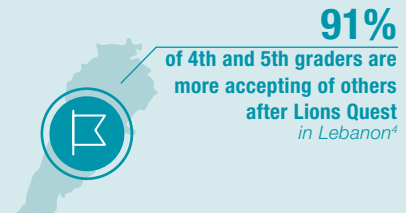
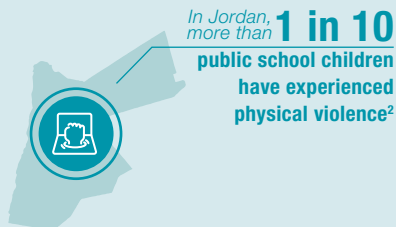
**Lions Clubs International
FOUNDATION**

Youth

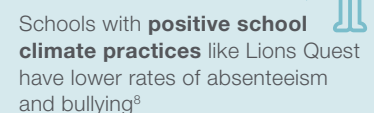


For the Children

Not all children have access to education. Still fewer are enriched by SEL programs like Lions Quest, which provide invaluable life skills and help youth create more promising futures.



THAT'S THIS PART OF THE WORLD. GLOBALLY, THE SITUATION LOOKS LIKE THIS:



LCIF AND LIONS

lcif.org/youth

Funding Service, Delivering Solutions

Harvard University found students participating in Lions Quest reported improved perceptions of school climate, and physical and emotional safety⁹. For 35 years+, LCIF has funded Lions Quest globally. Our commitment continues.

**LIONS QUEST
PROGRAM GRANTS**
develop/expand
the program

**UP TO
US\$150,000**

**LIONS QUEST
COMMUNITY
PARTNERSHIP
GRANTS**
launch/reactivate
the program

**UP TO
US\$15,000**

**LIONS QUEST
PROMOTIONAL
GRANTS**
introduce the program
to a community

**UP TO
US\$1,500**

**DISTRICT AND
CLUB COMMUNITY
IMPACT GRANTS**
apply to local district
and club projects

**GRANT
AMOUNT VARIES**

SOURCES/NOTE: ¹Durlak, J.A., Weissberg, R.P., Dymnicki, A.B., Taylor, R.D., & Schellinger, K. (2011). The impact of enhancing students' social and emotional learning: A meta-analysis of school-based universal interventions. Child Development: 82 (1), 405-432; ²UNICEF; ³Smile Foundation India; ⁴Skoun (2017): Lions Quest Life Skills Program in schools in Beirut: Program implemented by Skoun in partnership with World Vision Lebanon; ^{5,6,7}United Nations; ⁸Thapa, A., Cohen, J., Guffey, S., & Higgins-D'Alessandro, A. (2013). A review of school climate research. Review of educational research, 83(3), 357-385; ⁹Jones, S., Kahn, J., Nelson, B., and Temko, S. (2019). "Year 2 Report: A Quasi-Experimental Evaluation of Lions Quest Skills for Adolescence in Two Middle Schools." Cambridge, MA: Harvard University Graduate School of Education; grant limits subject to change



**Lions Clubs International
FOUNDATION**

LCIF is the grant-making body empowering Lions to create greater impact in their communities and around the world. The vast majority of funding LCIF receives is from Lions; one hundred percent of every donation supports Lions service through LCIF grants and programs.

Youth is just one cause area supported by LCIF and *Campaign 100: LCIF Empowering Service*. With financial support from Lions and clubs worldwide, Campaign 100 is empowering Lions to increase service impact in vision, youth, disaster relief, and humanitarian efforts; fight the global epidemic of diabetes; and make important progress in expanded cause areas of childhood cancer, hunger, and the environment.

**SUPPORT YOUR SERVICE
BY SUPPORTING YOUR
FOUNDATION**

lionsclubs.org/donate